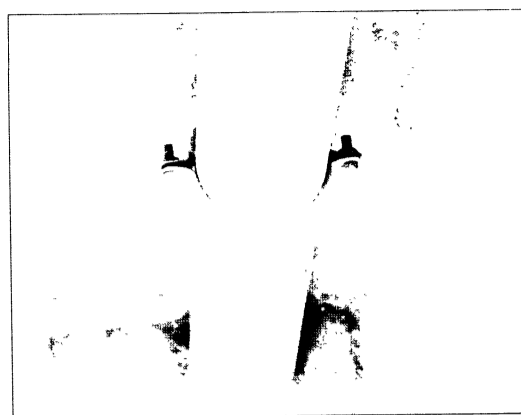
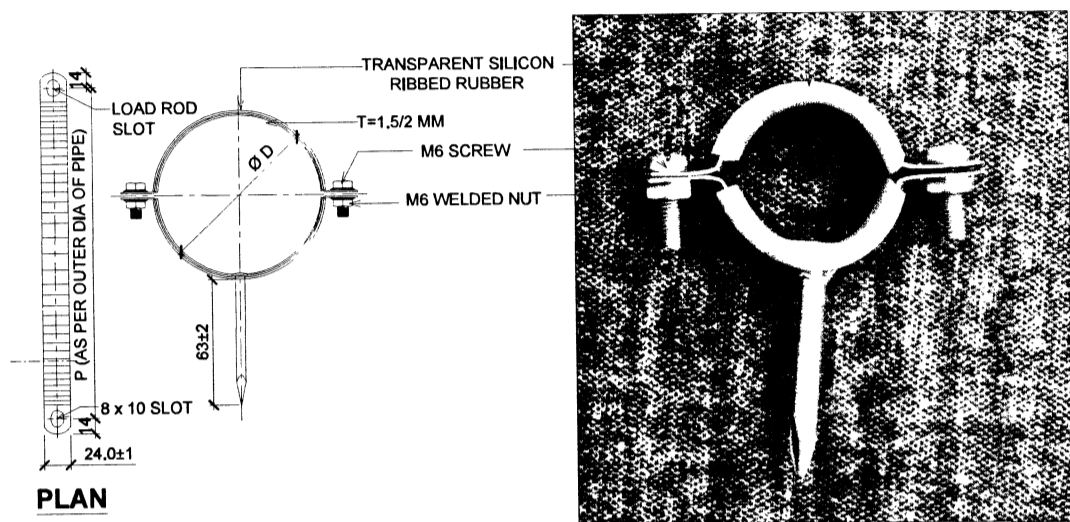


9

**DETAILS OF NAIL CLAMP**

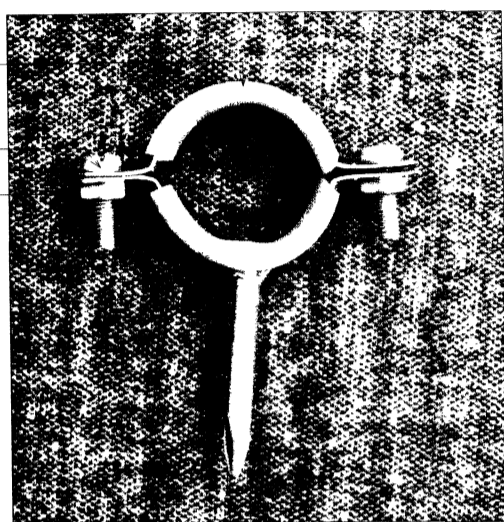


**INSTALLATION OF NAIL CLAMP AT SITE**



**PLAN**

NOTE :- TO BE USED FOR PIPES UPTO 110 MM DIA.



**NAIL CLAMP**

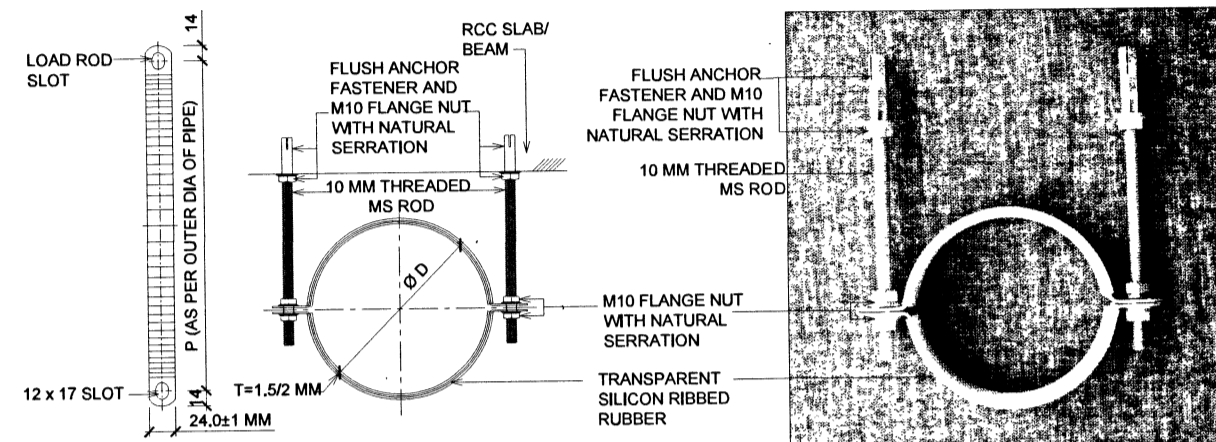
**NAIL CLAMP (H)**

10

**DETAILS OF DOUBLE SIDE SUSPENSION CLAMP**

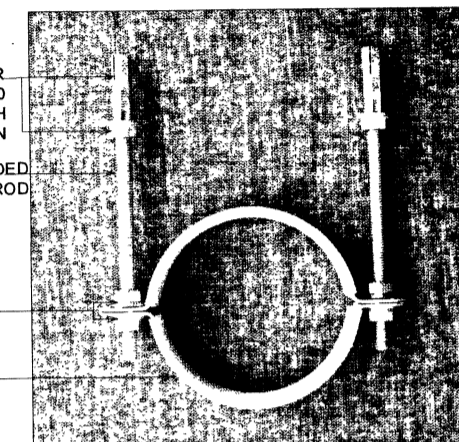


**FIXING DETAILS OF DOUBLE SIDE SUSPENSION CLAMP WITH SUPPORT AT SITE**



**PLAN**

NOTE :- WIDTH OF STRIP 24 x 1.5 MM TO BE USED UPTO 150 MM DIA AND FOR ABOVE 150MM DIA - 33 x 2 MM STRIP SIZE TO BE USED.



**DOUBLE SIDE SUSPENSION CLAMP**

**DOUBLE SIDE SUSPENSION CLAMP (J)**

**LEGEND**

SER.NO	DESCRIPTION	TYPE
1	NAIL CLAMP	H
2	DOUBLE SIDE SUSPENSION CLAMP	J
3	HEAVY DOUBLE SIDE SUSPENSION CLAMP	K
4	PIPE HANGER CLAMP	L

**GENERAL NOTES:-**

PROVIDING SUPPORT TO DRAINAGE AND WATER SUPPLY PIPES AT A SPECIFIED DISTANCE FROM THE WALL FOR VERTICAL AND HORIZONTAL LINES FIXED AT INTERVALS OF EVERY METER WHICH ARE MADE OF DEEP DRAW LOW CARBON STEEL (IS 1079 DD / IS 153 DD) OF SHAM OR EQUIVALENT.

**NAIL CLAMP (H)**

NAIL CLAMP IS MADE OF DEEP DRAWN COLD ROLL (CR) LOW CARBON STEEL (IS 513 DD) OF REPUTED MAKE WHICH IS RIBBED AND WITH TRANSPARENT SILICON RIBBED RUBBER OF 2 MM THICKNESS WITH ZN - AL (ZINC ALUMINIUM FLAKE) ANTI CORROSIVE COATING SHALL BE AS SHOWN IN DRAWING.

**DOUBLE SIDE SUSPENSION CLAMP (J)**

DOUBLE SIDE SUSPENSION CLAMP OF RIBBED GALVANISED COLD ROLL (CR) LOW CARBON STEEL (IS 513) WITH TRANSPARENT SILICON RIBBED RUBBER OF 2 MM THICKNESS AND WITH ZN - AL (ZINC ALUMINIUM FLAKE) ANTI CORROSIVE COATING SHALL BE AS SHOWN IN DRAWING.

**LOW CARBON SLOTTED LIP CHANNEL**

SLOTTED CHANNEL OF LOW CARBON DEEP DRAWN HOT ROLL GAUGE CORRECTED (HRGC) STEEL (IS 1079 DD) WITH HOT DIP GALVANISING (IS 2629) + ZN - AL (ZINC ALUMINIUM FLAKE) COATED AS SHOWN IN DRAWING.

**HEAVY DOUBLE SIDE SUSPENSION CLAMP (K)**

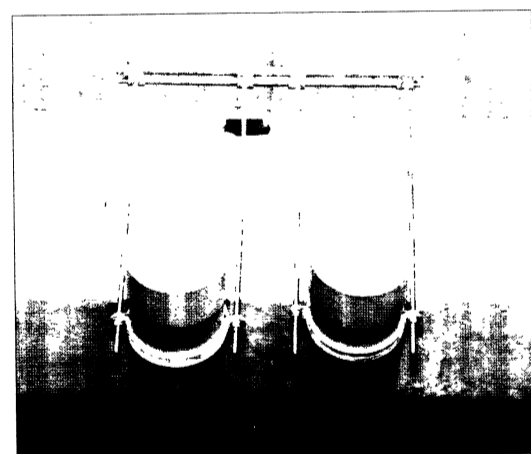
HEAVY DOUBLE SIDE SUSPENSION CLAMP OF RIBBED GALVANISED LOW CARBON HOT ROLL GAUGE CORRECTED (HRGC) STEEL (IS 1079 DD) WITH TRANSPARENT SILICON RIBBED RUBBER OF 2 MM THICKNESS AND WITH HOT DIP GALVANISING (IS 2629) + ZN - AL (ZINC ALUMINIUM FLAKE) ANTI CORROSIVE COATING SHALL BE AS SHOWN IN DRAWING.

**PIPE HANGER CLAMP (L)**

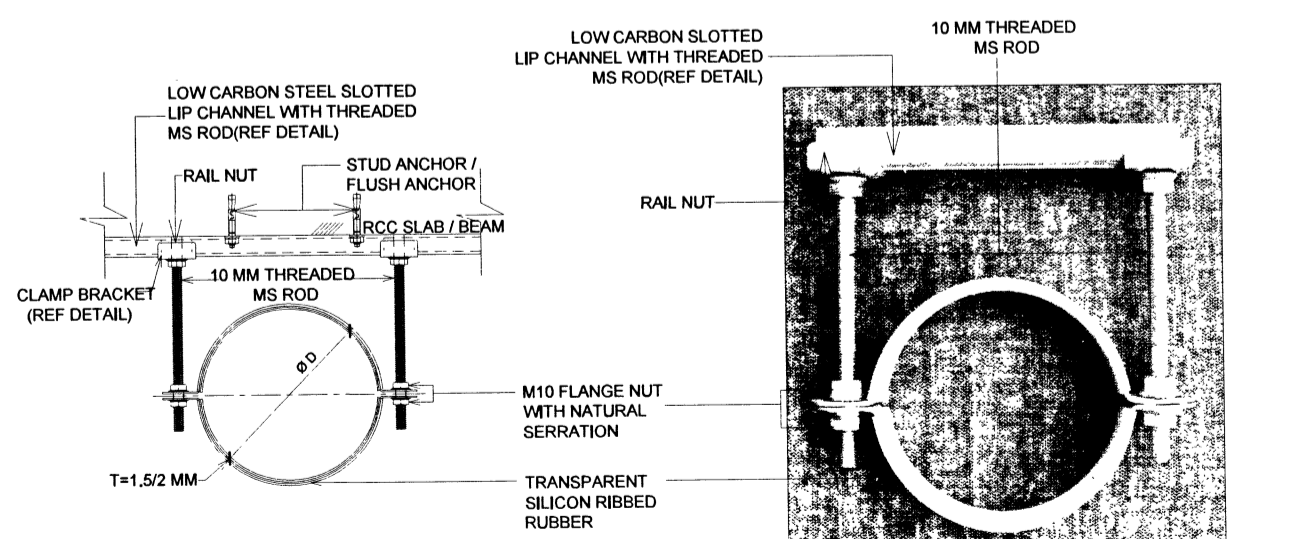
PIPE HANGER CLAMP OF RIBBED GALVANISED COLD ROLL (CR) LOW CARBON STEEL (IS 513 DD) WITH TRANSPARENT SILICON RIBBED RUBBER OF 2 MM THICKNESS AND WITH ZN - AL (ZINC ALUMINIUM FLAKE) ANTI CORROSIVE COATING SHALL BE AS SHOWN IN DRAWING.

11

**DETAILS OF HEAVY DOUBLE SIDE SUSPENSION CLAMP**



**FIXING DETAILS OF HEAVY DOUBLE SIDE SUSPENSION CLAMP WITH LIP CHANNEL AT SITE**



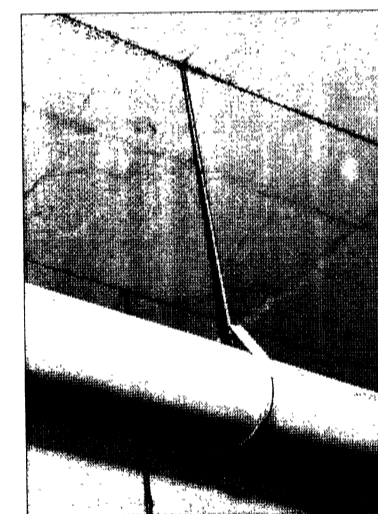
**PLAN**

**HEAVY DOUBLE SIDE SUSPENSION CLAMP**

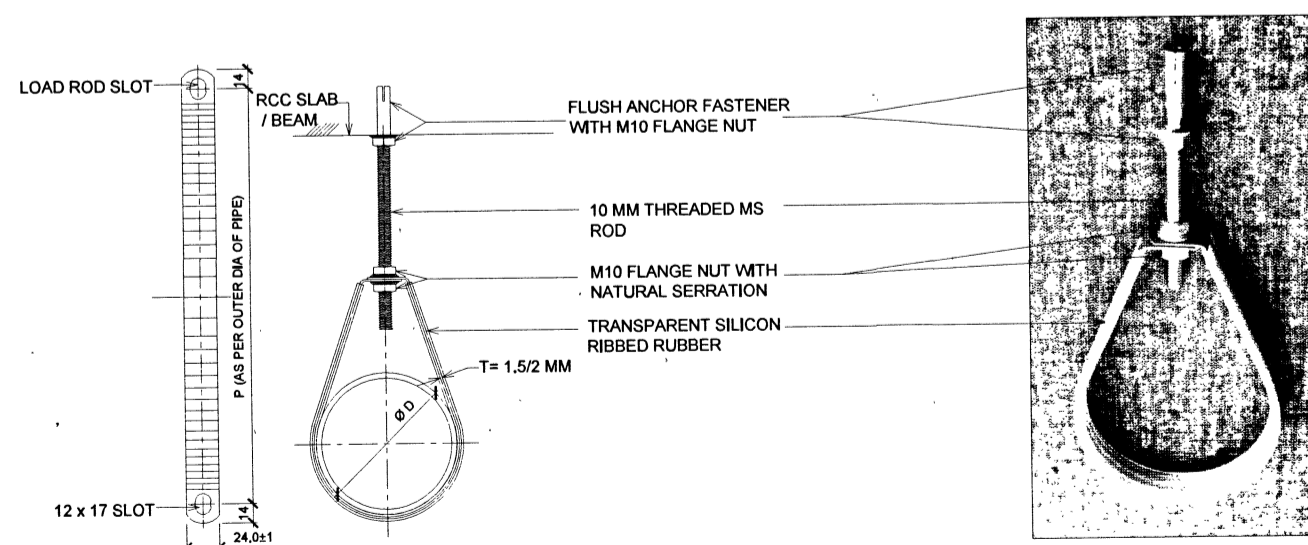
**HEAVY DOUBLE SIDE SUSPENSION CLAMP (K)**

12

**DETAILS OF PIPE HANGER CLAMP**

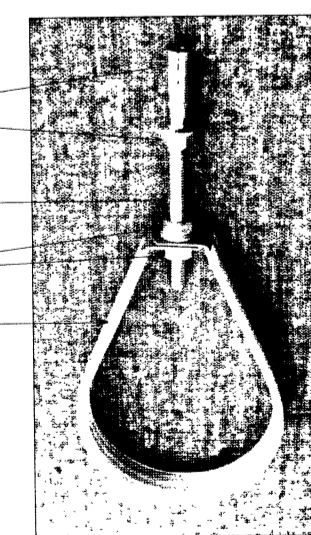


**FIXING DETAILS OF PIPE HANGER CLAMP AT SITE**



**PLAN**

NOTE :- WIDTH OF STRIP 24 x 1.5 MM TO BE USED UPTO 150 MM DIA AND FOR ABOVE 150MM DIA - 33 x 2 MM STRIP SIZE TO BE USED.



**PIPE HANGER CLAMP**

**PIPE HANGER CLAMP (L)**

No.	DESCRIPTION	Date	SIGN
-----	-------------	------	------

**REVISION**

**FACTORY MADE PIPE SUPPORTING SYSTEM**

**DETAILS OF NAIL CLAMP, DOUBLE SIDE SUSPENSION CLAMP, HEAVY DOUBLE SIDE SUSPENSION CLAMP & PIPE HANGER CLAMP**

DATE	23-10-2023	<p><b>CHIEF ENGINEER</b> <b>PUNE ZONE</b></p>	SHT NO	
DRN	SUB SANTOSH		3	
TKD			4	
CKD				
SCALE	DRG NO:- CEPZ/2023/TD/ 03			

AAD (ARCH)
   
 DY DIR (ARCH)
   
 DIR (ARCH) FOR CHIEF ENGINEER